

KEY FIGURES

17.8M

PEOPLE IN NEED

8.8M

PEOPLE TARGETED

7.2M

PEOPLE REACHED
(Jan - May 2018)

49

ACTIVE PARTNERS

CLUSTER OBJECTIVES

1 Improve immediate household availability of and access to food for the most vulnerable

2 Ensure equitable access to assistance and protection for the most vulnerable.

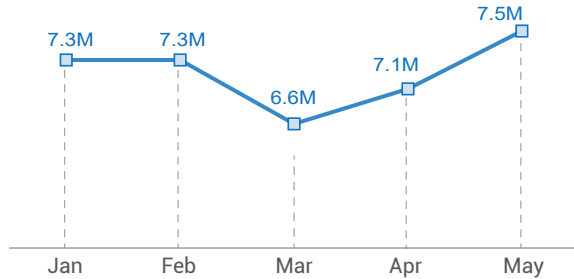
3 Improve household food security for at risk groups by supporting agricultural, livestock and fishery systems and assets

4 Strengthen emergency preparedness and response capacity of partners, communities and authorities

Cluster Overview

A monthly average of 7.1 million people were reached with emergency food assistance through in-kind, cash transfers and vouchers. In addition, approx. 871,000 individuals received livelihoods assistance including agricultural, livestock and fisheries inputs.

Number of beneficiaries (Jan - May 2018)



Funding Status

46%

\$590M
Funding Gap

54%

\$681M
Funded

\$1.27B
Total funding requirements

Emergency food assistance by modality



6M
PEOPLE
reached with in-kind assistance

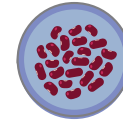


900,000
PEOPLE
reached with vouchers



200,000
PEOPLE
reached with cash

Increase of Commodity prices (since beginning of the crisis)



Red beans
104%



Wheat flour
60%



Vegetable oil
39%

Humanitarian Response monitoring indicators



7.1M
PEOPLE
provided with emergency food assistance



871,000
PEOPLE
provided with agriculture, livestock or fisheries assistance

Districts at heightened risk of famine

10.4M
PEOPLE LIVING
in 107 famine districts



3.6M
PEOPLE TARGETED
in 107 famine districts



3.4M
PEOPLE REACHED
with assistance in 107 famine districts



Food Insecurity

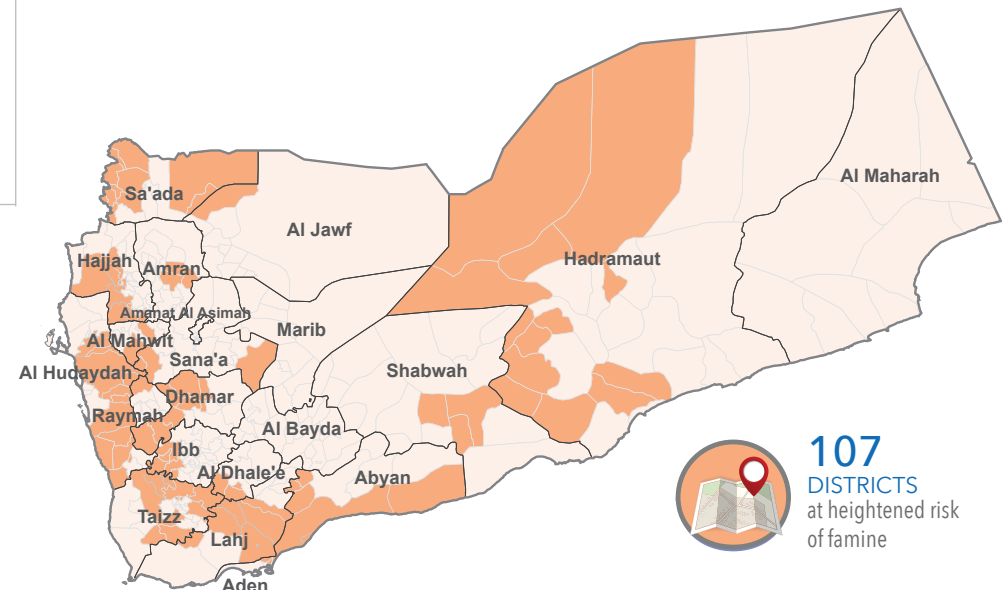


9.4M
MODERATELY FOOD
INSECURE PEOPLE
targeted with emergency
food assistance



8.4M
SEVERELY FOOD
INSECURE PEOPLE
targeted with emergency
food assistance

Beneficiaries reached by sex and age



107
DISTRICTS
at heightened risk
of famine