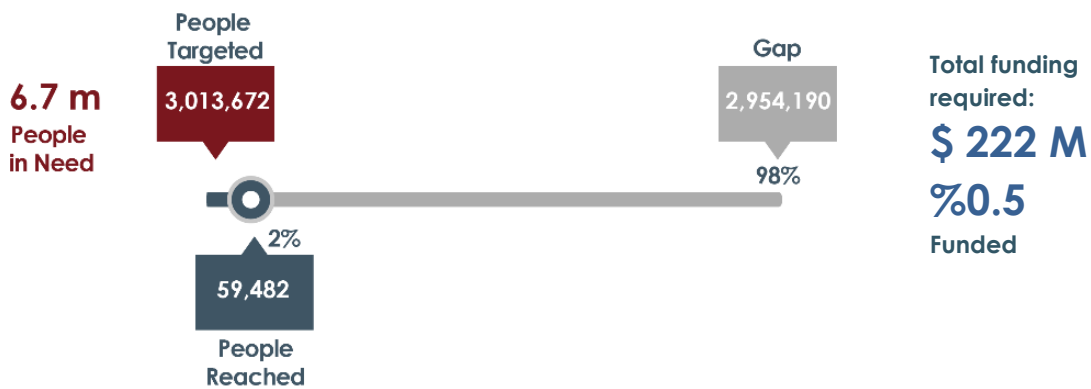
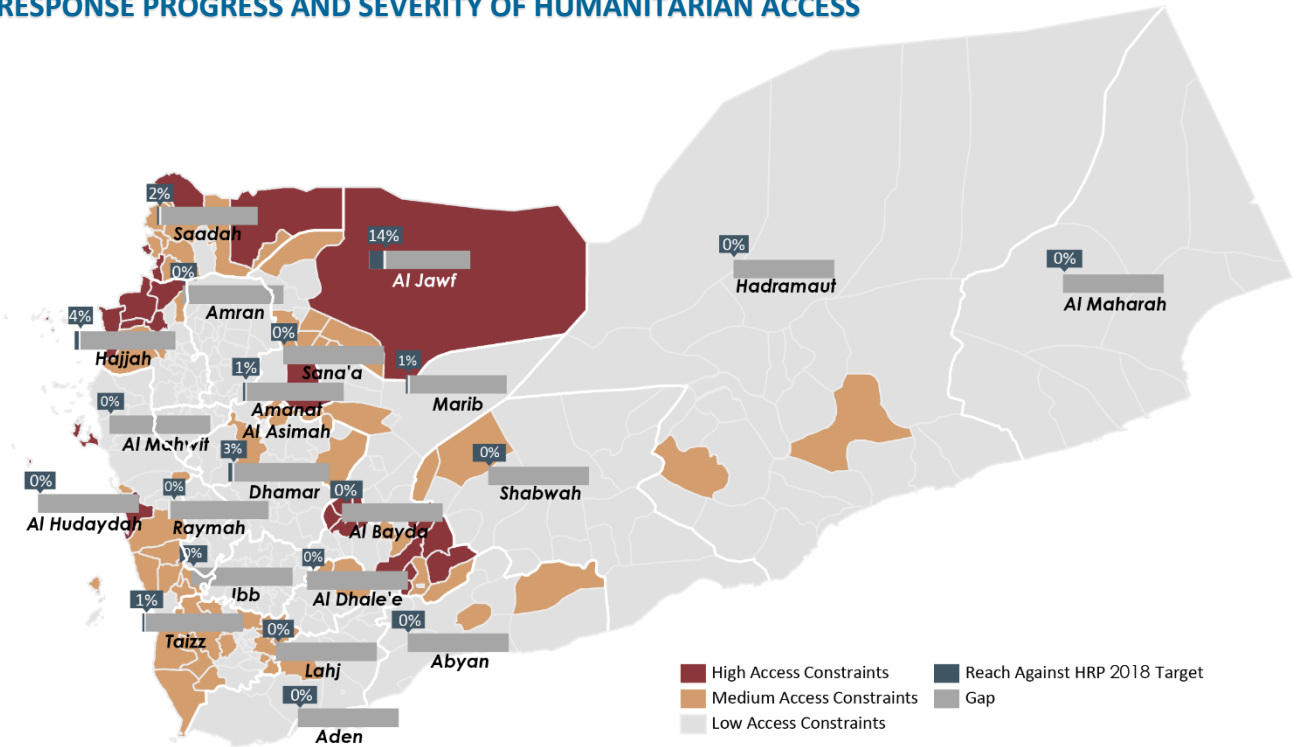


MONTHLY SITUATION REPORT

JANUARY 2019

RESPONSE PROGRESS AND SEVERITY OF HUMANITARIAN ACCESS



HIGHLIGHTS

- The situation on the conflict frontlines remains intense and generates waves of displacements especially in Al Hudaydah, Hajjah, and Taizz governorates.
- An IDP hosting site in Haradh district was struck resulting in the killing of 8 civilians.
- In January, the Shelter/NFI/CCCM Cluster reached 59,500 people in need through 15 active partners.
- The Shelter/NFI/CCCM Cluster has requested \$222 million to provide assistance to 3 million people in 2019.

OVERVIEW OF HUMANITARIAN NEEDS IN YEMEN

AL HUDAYDAH HUB



An IDP is being interviewed by JAADH (Jeel Albena Association for Humanitarian Development) in Al Hudaydah governorate. Photo: JAADH.

The situation in Al Hudaydah governorate witnessed ground fighting and airstrikes, mainly in Al Hudaydah City. Reports suggested return of some displaced families to their homes. Humanitarian agencies continued to scale-up their programs to respond to the huge needs of affected population.

A strike hit an IDP hosting site in Haradh district that used to accommodate 210 IDPs and resulted in the killing of 8 civilians and injury of 30 including women and children while the other residents fled the site to other location.

The fighting in Hajjah conflict frontlines (mainly in Haradh, Mustaba and Kushar districts) has forced families to flee the fighting to other districts such as Abs, Ku'aydinah, Khayran Al Muharraq and other districts within the governorate. Displaced families were found to be in need of NFIs and Shelter assistance.

Inter-agency mission to Hajjah revealed that there is daily flow of displacement towards Abs district and the needs for NFI and shelter assistance are increasing, particularly for those who are living in inadequate shelters.

ADEN HUB



Shelters provided by UNHCR to IDPs in Sabir hosting site, Tuban district, Lahj governorate. Photo: UNHCR.

The fighting in Lahj, Al Dhale'e and Taizz governorates in addition to Al Hudaydah governorate continue to push families who have no choice but to leave their homes and seek safety. Reports indicated that families tend to settle in south Taizz, Aden, Lahj and Abyan governorates.

IBB HUB

SNCC (Sub-National Cluster Coordinator) organized field visit participated by UNHCR, NAMCHA (National Authority for the Management and Coordination of Humanitarian Affairs and Disaster Recovery) and YWU team to an IDP hosting site in Dhi As Sufal district to assess the needs and gaps in the site. After the mission, eight families who were found to be in dire need of assistance were provided with family tents and NFIs.

SA'ADAH HUB

Fighting in many districts along the border of Sa'adah governorate resulted in massive displacement mainly to Sa'adah City. Many IDPs and host communities are desperately in need of humanitarian assistance since they are away from their home and deprived from access to basic needs.

Access remains an issue in some of the districts of Sa'adah and Al Jawf which hinders the delivery of humanitarian assistance to people in need.

ASSISTANCE DELIVERED



An IDP child received NFIs distributed by JAADH (Jeel Albena Association for Humanitarian Development) in Al Hudaydah governorate. Photo: JAADH.

- **NFIs distribution completed for 7,500 people mainly in Dhamar and Hajjah governorates.**
- **EESKs distribution completed for 9,250 people mainly in Ibb governorate.**
- **Transfer of cash for rental subsidies completed for 10,800 people mainly in Al Jawf and Taizz governorates.**
- **Construction and rehabilitation of Transitional Shelter benefited 17,700 people in Hajjah governorate.**
- **Transfer of winterization cash grants completed for 15,550 people mainly in Al Jawf and Sa'adah governorates.**

HUMANITARIAN RESPONSE PLAN 2019

The Shelter/NFI/CCM Cluster is planning to target 3 million people out of 6.7 million in need for Shelter, NFIs and Site Management and Coordination support with total request of \$222 million USD.

The Cluster section focused on the following:

- Provide immediate emergency supplies to newly displaced families and help ensure basic services are available at under-served IDP hosting sites.
- Increase the sustainability of shelter arrangements
- Help upgrade living conditions for families living in IDP settlements and transitional shelter arrangements