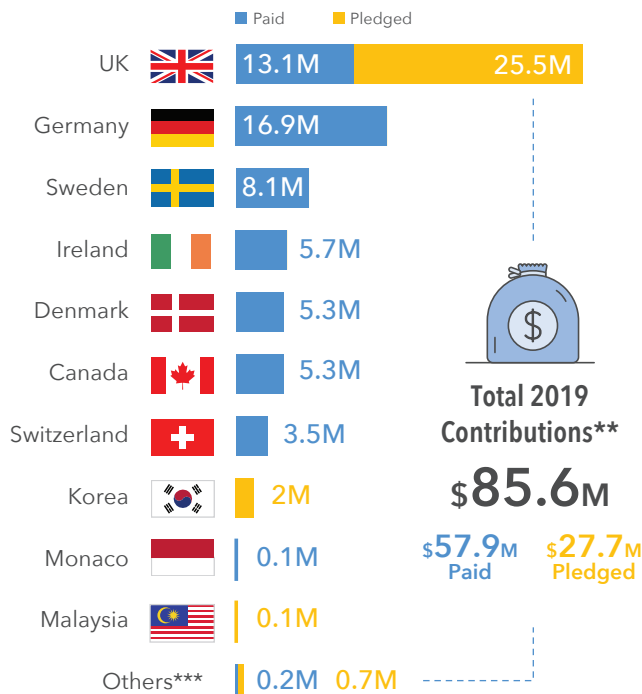


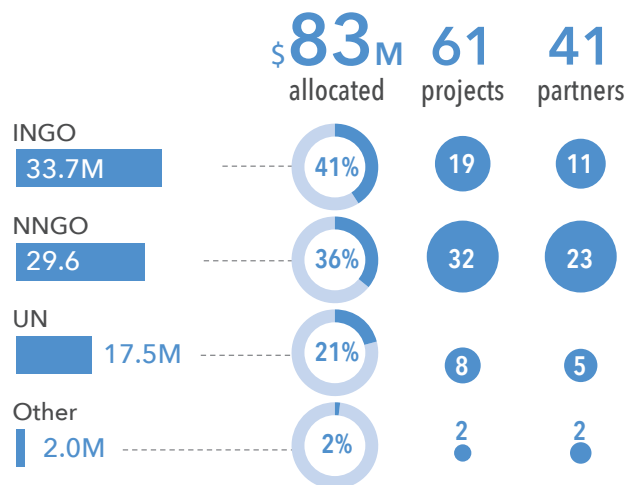
The 1st YHF Standard Allocation (SA) was launched on 31 January with the objective of covering key gaps in the existing operation and support the immediate scale-up of activities in highly vulnerable communities. The following parameters were identified: Expanding high impact programs in districts classified as IPC 4 and above; Scaling up assistance in priority IDP hosting sites and Scaling-up first line assistance in areas of new displacement. Almost 3.7m beneficiaries will benefit from these life-saving interventions. Overall, 61 projects amounting to almost US\$83 millions will be implemented by 41 partners in 18 governorates.

Top 10 Donors in 2019* (in US\$ million)



* As of 23 April.
 ** The total does not include 2018 carry-over.
 *** Cyprus, Lithuania, Philippines

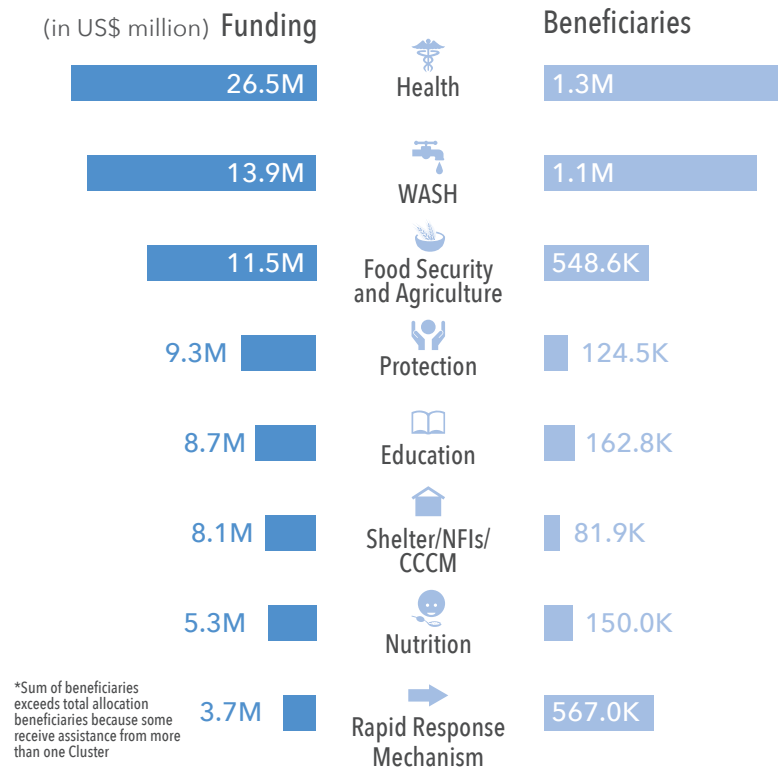
Allocation by Partner Type



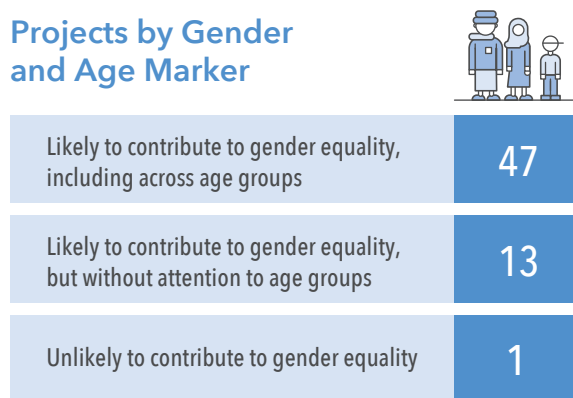
Cash & Vouchers Programming



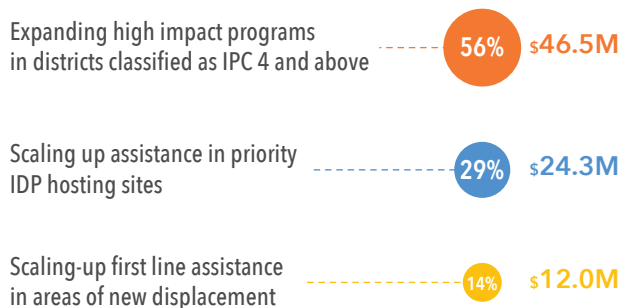
Funding and Beneficiaries by Cluster



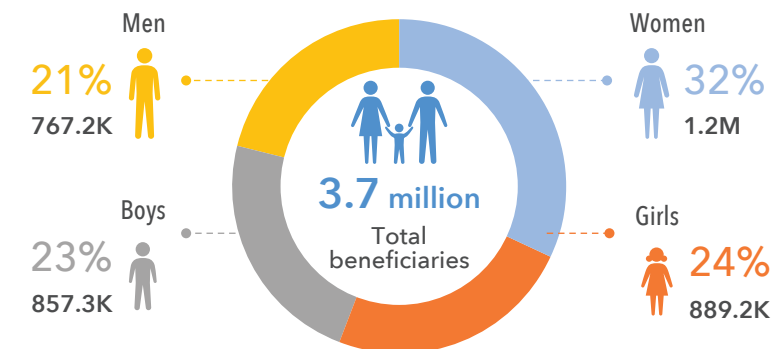
Projects by Gender and Age Marker

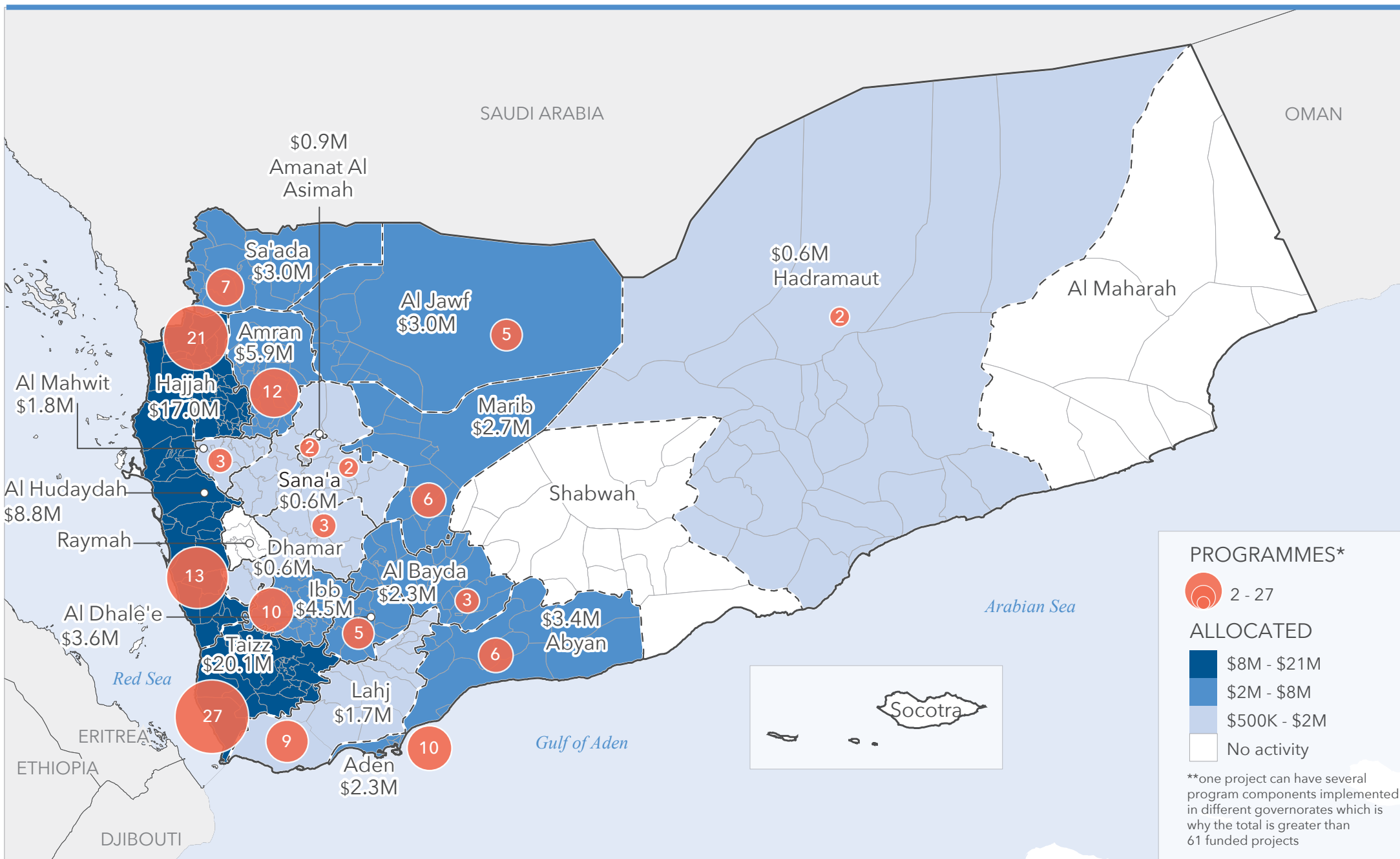


Allocation by parameter



Beneficiaries Targeted by Sex and Age


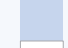




PROGRAMMES*

 2 - 27

ALLOCATED

-  \$8M - \$21M
-  \$2M - \$8M
-  \$500K - \$2M
-  No activity

**one project can have several program components implemented in different governorates which is why the total is greater than 61 funded projects

The boundaries and names shown and the designations used on this map do not imply official endorsement or acceptance by the United Nations.